

SALVAJOR[®] Trough Collector[™]

Job: _____ Item No.: _____

Model S419



A Trough Conveying and Food Waste Collecting System

Widely accepted in areas that restrict the use of food waste disposers.

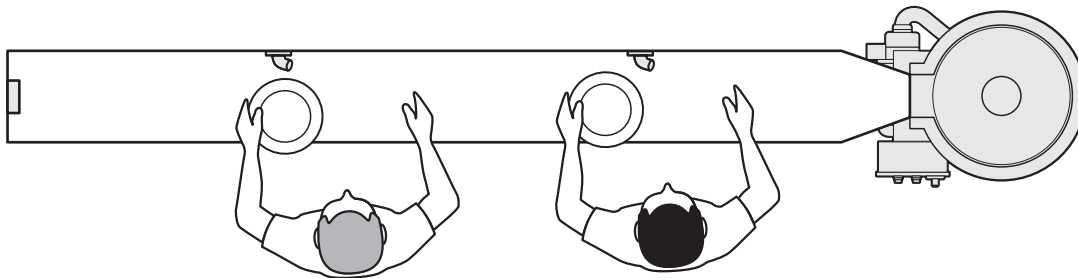
Recirculated Water used by the system for scrapping reduces water and sewer costs. The Trough Collector consumes only 2 gallons of fresh water per minute.

Trough Water Volume with the Trough Collector is 70 gallons per minute. This volume swiftly propels food waste down the trough and into the Collector with no additional hand movement, leaving both hands free for high-volume scrapping. The Trough Collector will let you keep up with large conveyor or flight dishmachines.

Design Flexibility is offered by the Collector as troughs can turn corners. The Collector's high water volume allows the design of wider, longer troughs allowing you to soak problem dishes or add gusher heads to pre-rinse compartmental trays.

HydroLogic Water Saving Control has an adjustable timer with user friendly LCD readout.

Typical trough layout



Typical trough layout is 12" wide and 10' in length with up to 2 optional gusherheads spaced 3' - 4' apart to accommodate 2 operators.

Trough Collector™ Model S419

- Trough must have a minimum 3" depth with a fall of at least 3/32" per running foot towards the collector.
- Minimum 6" clearance is required from the trough to the wall to allow room for recirculation piping.
- 22" minimum clearance overhead for basket removal. An additional basket is recommended at additional cost.

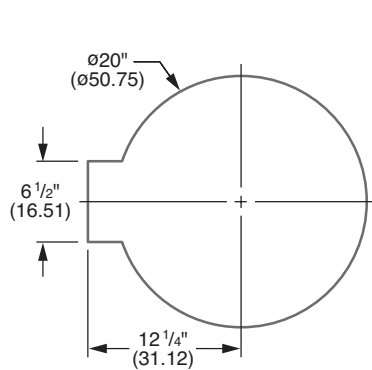
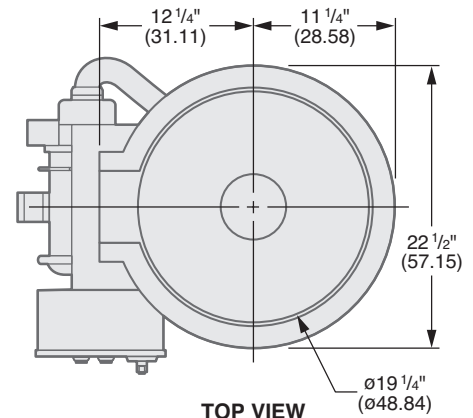


TABLE CUTOUT DETAIL



TOP VIEW

We suggest the use of rubber Gusher Heads along the trough for scraping and pre-flushing. One per operator, two max. (Optional at additional cost) 1 5/16" diameter hole required in trough.

Scrap Basket dimensions 18 9/16" dia. x 13 1/4" high (47.2 dia. x (33.7) high)

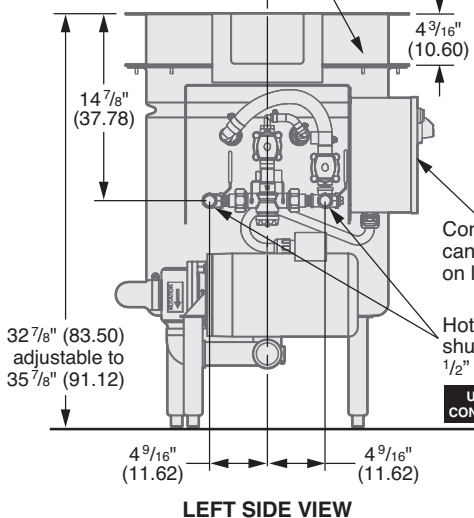
Fabricated trough (not furnished), must have matching flange to attach to trough connection. (See detail "C")

One basket provided with unit
Additional basket recommended at additional cost

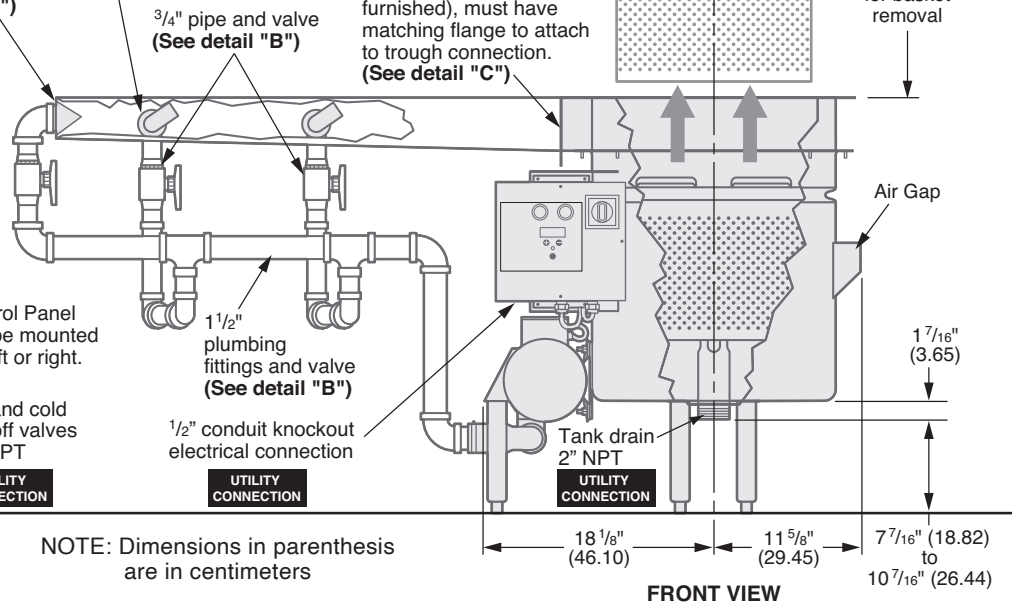
22" (55.88) minimum clearance overhead for basket removal

Water Diffuser furnished. 2" diameter hole required in back of trough. (See detail "A")

Removable Trough Collector top can be rotated in 15° increments.



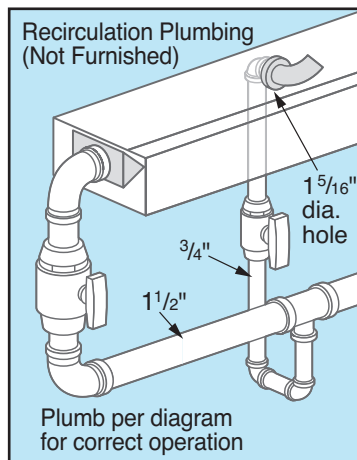
LEFT SIDE VIEW



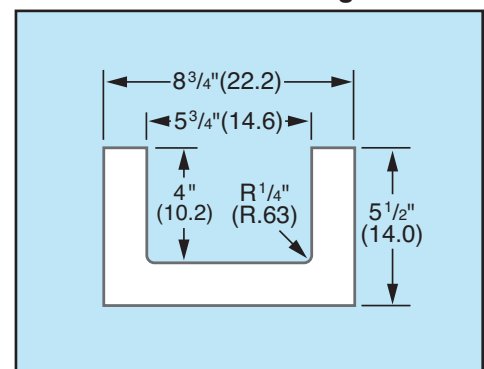
FRONT VIEW

NOTE: Dimensions in parenthesis are in centimeters

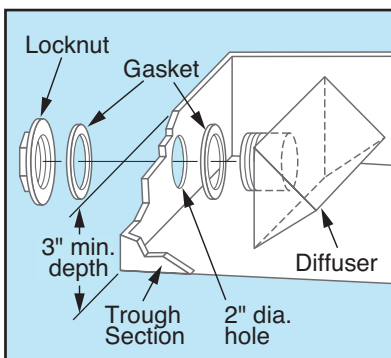
Detail "B" - Recirculation



Detail "C" - Trough Connection Flange



Detail "A" - Water Diffuser

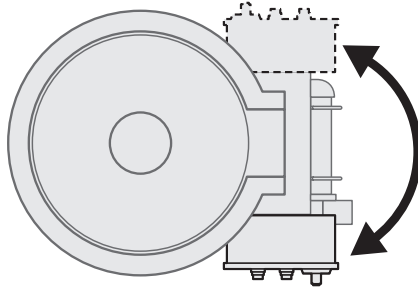


Trough Collector™ Model S419

UTILITY CONNECTIONS

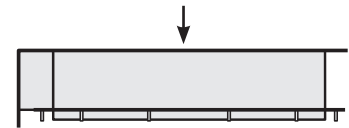
- Incoming electrical connection → factory wired control panel
- Incoming hot/cold water connection → factory plumbed water harness
- Drain connection → 2" NPT

The control can be mounted on either side of the Collector using existing mounting bracket, mounting holes, fasteners and wiring for dish flow to the left or dish flow to the right.

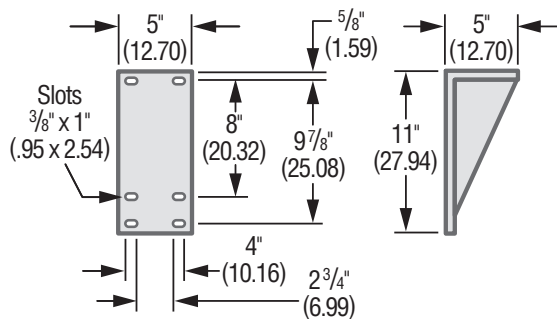


All connections are to be made by qualified personnel who will observe all local and national codes.

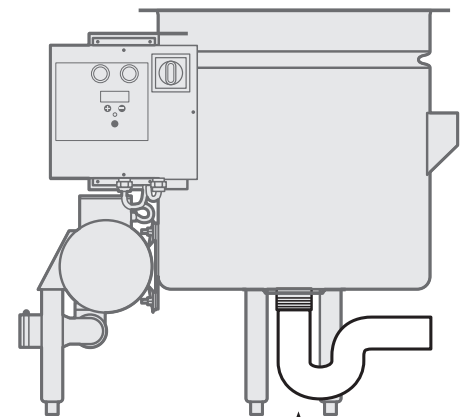
Upon request, the Trough Collector top may be shipped separately to an alternate location for fabrication.



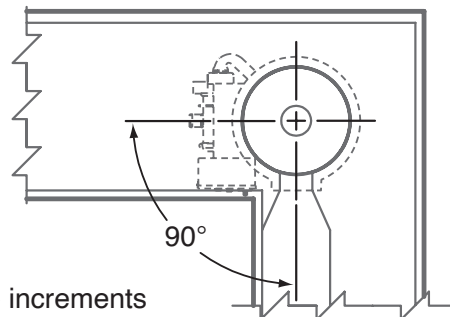
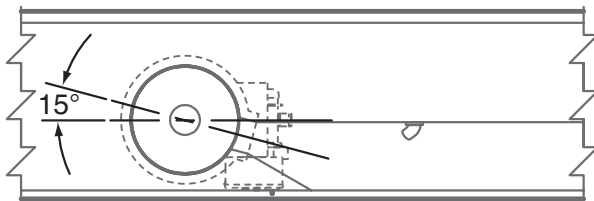
#980104 Optional Remote Control Mounting Bracket



The control can be mounted remotely using optional remote mounting bracket. *Note: Additional field wiring is necessary.*



2" Tank Drain
(Piping not furnished)



The Trough Collector top can be rotated in 15 degree increments to ease common installations as well as improve design flexibility without the need of costly tank modifications.

Trough Collector™

Model S419 Specifications

CONSTRUCTION

- Tank - 2 Piece Stainless Steel
- Adjustable Legs - Stainless Steel
- Control Panel - Stainless Steel
- Salvage Basin - High Impact Polymer
- Scrap Basket - High Impact Polymer

ELECTRICAL

- Pre-wired NEMA 4 Control Panel
- Watertight Conduit/Fittings
- Separate Component Grounding
- Thermally Protected Motor
- Safety Line Disconnect
- 24 Volt Safety Circuitry

PLUMBING

- Corrosion Resistant Components
- Automatic Water Blender
- Unions
- Check Valves
- Incoming Water Valves
- Non-clogging Pump Design
- Pump Intake Screen

ACCESSORIES

- Remote Start-Stop
- Remote Mounting Bracket
- Correctional Package
- Control Mounting Bracket
- Additional Scrap Basket
- Rack Guide
- Full Stainless Cover
- Gusher Heads

VOLTAGES AVAILABLE

(SPECIFY EXACT OPERATING VOLTAGE)

- 115V 208V 230V, 60 Cycle, 1 Phase
- 208V 230V 460V, 60 Cycle, 3 Phase

Pump Motor $\frac{3}{4}$ HP

FULL LOAD AMPS

(SPECIFY EXACT OPERATING VOLTAGE)

1 PHASE			3 PHASE		
115V	208V	230V	208V	230V	460V
11	5.5	5.5	3.2	3	1.5

UTILITIES REQUIRED

1. Electric service
2. 3/4" hot and cold water supply and reduce to 1/2" at connection.
3. 2" tank drain.

(Specifications subject to change without notice.)

SAMPLE SPECIFICATIONS

Unit shall be a Salvajor Trough Collector, a complete scrapping, pre-flushing and food waste collecting system with recirculating water as manufactured by Salvajor.

Model S419, ___ Volts, 60Hz, ___ Phase.

Furnished with a pre-wired control panel and stainless steel NEMA 4 watertight enclosure.



SALVAJOR®

Manufacturers of Commercial Food Waste Solutions - Since 1944

4530 East 75th Terrace Kansas City, MO 64132-2081, USA

816.363.1030 | Toll Free: 1.800.725.8256 | Service: 1.888.725.8256 | Fax: 1.800.832.9373

sales@salvajor.com | service@salvajor.com | www.salvajor.com

Printed in USA
Form No. S419 (01-26)